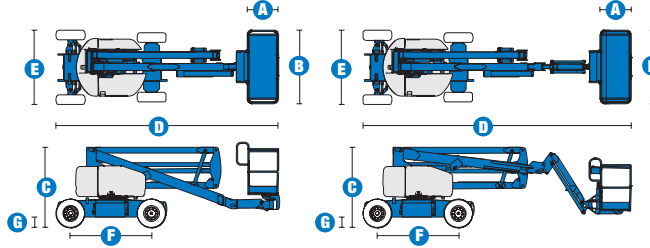


Specifications



MODELS	Z™-45/25 DC & Bi		Z™-45/25J DC & Bi	
MEASUREMENTS	Metric	US	Metric	US
Working height maximum*	15.87 m	52 ft 1 in	15.94 m	52 ft 3 in
Platform height maximum	13.87 m	45 ft 6 in	13.94 m	45 ft 8 in
Horizontal reach maximum	7.62 m	25 ft	7.65 m	25 ft 1 in
Up-and-over clearance maximum	7.04 m	23 ft 1 in	7.24 m	23 ft 8 in
A Platform length	76 cm	2 ft 6 in	76 cm	2 ft 6 in
B Platform width	1.83 m	6 ft	1.83 m	6 ft
C Height - stowed	2 m	6 ft 7 in	2 m	6 ft 7 in
D Length - stowed	5.56 m	18 ft 3 in	6.83 m	22 ft 5 ft
E Width	1.79 m	5 ft 10.5 in	1.79 m	5 ft 10.5 in
F Wheelbase	2.03 m	6 ft 8 in	2.03 m	6 ft 8 in
G Ground clearance - centre	24 cm	9.5 in	24 cm	9.5 in

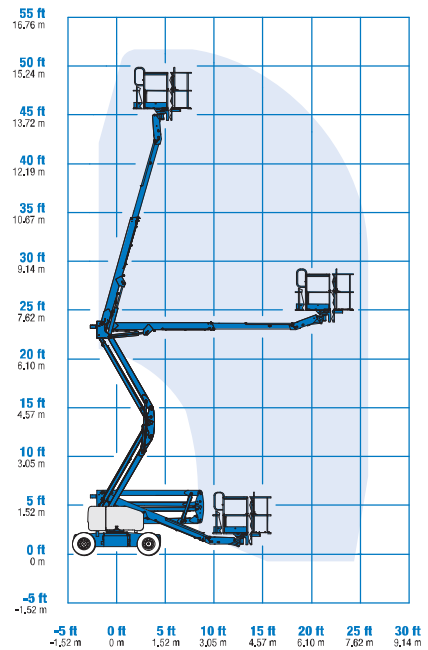
PRODUCTIVITY				
Lift capacity	227 kg	500 lbs	227 kg	500 lbs
Platform rotation	180°	180°	160°	160°
Vertical jib rotation	---	---	135°	135°
Turntable rotation	355° non-continuous		355° non-continuous	
Turntable tailswing	zero	zero	zero	zero
Drive speed - stowed	4.8 km/h	3.0 mph	4.8 km/h	3.0 mph
Drive speed - raised **	1.1 km/h	0.68 mph	1.1 km/h	0.68 mph
Gradeability - stowed***	30%	30%	30%	30%
Turning radius - inside	1.83 m	6 ft	1.83 m	6 ft
Turning radius - outside	4.26 m	14 ft	4.26 m	14 ft
Controls	24 V DC proportional		24 V DC proportional	
Tyres (foam filled)	23 x 37 cm	9 x 14.5 in	23 x 37 cm	9 X 14.5 in

POWER				
Power source - DC	48 V DC (eight 6 V batteries, 350 Ah capacity)			
Power source - Bi-Energy	48 V DC (eight 6 V batteries, 350 Ah capacity) with Kubota 12 hp (8.9 kW) diesel driven alternator			
Auxiliary power unit	24 V DC	24 V DC	24 V DC	24 V DC
Hydraulic tank capacity	30.3 L	8 gal	30.3 L	8 gal
Fuel tank capacity	34.1 L	9 gal	34.1 L	9 gal

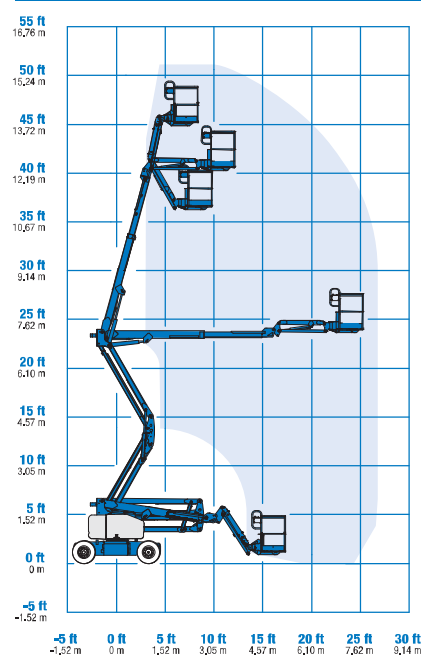
WEIGHT****				
CE DC (foam filled tyres)	7,310 kg	16,116 lbs	7,741 kg	17,066 lbs
CE Bi-energy (foam filled tyres)	7,537 kg	16,616 lbs	7,967 kg	17,564 lbs

STANDARDS COMPLIANCE	CE EN280, PB-10-611-03
----------------------	------------------------

RANGE OF MOTION Z™-45/25



RANGE OF MOTION Z™-45/25J



* The metric equivalent of working height adds 2 m to platform height. U.S. adds 6 ft to platform height.

** In lift mode (platform raised), the machine is designed to operate on firm, level surfaces only.

*** Gradeability applies to driving on slopes. See operator's manual for details regarding slope ratings.

**** Weight will vary depending on options and/or country standards.

Features

EASILY CONFIGURED TO MEET YOUR NEEDS

PLATFORM OPTIONS

- Steel 1.83 m (6 ft) (standard)
- Steel 1.22 m or 1.52 m (4 ft or 5 ft)

JIB OPTIONS

- Non-jib
- Articulating 1.52 m (5 ft) jib boom

POWER

- 48 V DC (eight 6 V 350 Ah batteries)

BATTERY CHARGING OPTIONS

- 25 Amp 48 V onboard charger
- Onboard alternator powered by Kubota diesel 8.9 kW (12 hp) engine

TYRE OPTIONS

- Industrial foam-filled (standard)
- Industrial air
- Industrial non-marking air or foam-filled

STANDARD FEATURES

MEASUREMENTS

Z™-45/25

- 15.87 m (52 ft 1 in) working height
- 7.62 m (25 ft) horizontal reach
- 7.04 m (23 ft 1 in) up-and-over clearance
- Up to 227 kg (500 lb) lift capacity

Z™-45/25J

- 15.94 m (52 ft 3 in) working height
- 7.65 m (25 ft 1 in) horizontal reach
- 6.73 m (22 ft 1 in) up-and-over clearance
- Up to 227 kg (500 lb) lift capacity

PRODUCTIVITY

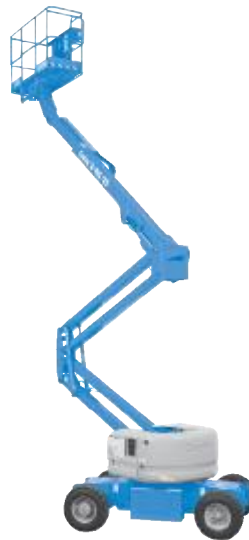
- Self-levelling platform
- Hydraulic platform rotation
- Fully proportional controls
- Thumb rocker steer
- Drive enable
- AC power to platform
- Horn
- Hour meter
- Tilt alarm
- 355° non-continuous turntable rotation
- Zero tailswing
- Certified load sensor

* Reduces platform capacity to 200 kg (440 lbs)

STANDARD FEATURES

POWER

- 48 V DC deep cycle battery pack
- 24 V DC auxiliary power
- Battery charge indicator - BCI (Bi-energy only)



OPTIONS & ACCESSORIES

PRODUCTIVITY

- Platform swing gate
- Half-mesh platform inserts with swing gate
- Platform top auxiliary rail
- Air line to platform
- Fire resistant hydraulic oil
- Biodegradable hydraulic oil
- Standard aircraft protection package*
- Deluxe aircraft protection package*
- Tool tray
- Fluorescent tube caddy
- Pipe cradle (pair)
- Alarm package (flashing beacon and travel alarm)
- Platform works lights
- Lockable platform control box covers
- Tow package

POWER

- Battery charge indicator - BCI (DC only)
- Low voltage interrupt with BCI
- Inverter (DC only)

UK

Millennium House
Brunel Drive
Newark NG24 2DE
UK
Tel: +44 (0)1476 584333
Fax: +44 (0)1476 584334

France

10, ZA de la Croix St. Mathieu
28320 Gallardon
France
Tel: +33 (0)2 37 26 09 99
Fax: +33 (0)2 37 26 09 98

Germany

Finienweg 3
28832 Achim/Bremen
Germany
Tel: +49 (0)4202 8852-0
Fax: +49 (0)4202 8852-25

Spain

Gaià 31, Pol. Ind. Plá d'en Coll
08110 Montcada i Reixac
Barcelona
Spain
Tel: +34 93 572 50 90
Fax: +34 93 572 50 91

Scandinavia

Importgatan 17
422 46 Hisings Backa
Sweden
Tel: +46 31 57 51 00
Fax: +46 31 57 90 20

Middle East

Terex Middle East
PO Box 282325, Dubai
U.A.E.
Tel: +971 4 885 8030
Fax: +971 4 885 6364
Email: awp.informe@terex.com

Genie United States

18340 NE 76th Street
P.O. Box 97030
Redmond, WA
USA 98073-9730
Tel: +1 425 881-1800
Fax: +1 425 883-3475

Email: AWP-InfoEurope@terex.com

Distributed By:

Effective date: December, 2008. Product specifications and prices are subject to change without notice or obligation. The photographs and/or drawings in this document are for illustrative purposes only. Refer to the appropriate Operator's Manual for instructions on the proper use of this equipment. Failure to follow the appropriate Operator's Manual when using our equipment or to otherwise act irresponsibly may result in serious injury or death. The only warranty applicable to our equipment is the standard written warranty applicable to the particular product and sale and we make no other warranty, expressed or implied. Products and services listed may be trademarks, service marks or trade-names of Terex Corporation, Genie Industries, Inc. and/or their subsidiaries in the U.S.A. and many other countries. All rights are reserved. Terex is a Registered Trademark of Terex Corporation in the U.S.A. and many other countries. Genie is a Registered Trademark of Genie Industries, Inc in the U.S.A. and many other countries. Genie is a Terex Company. Copyright 2008 Terex Corporation